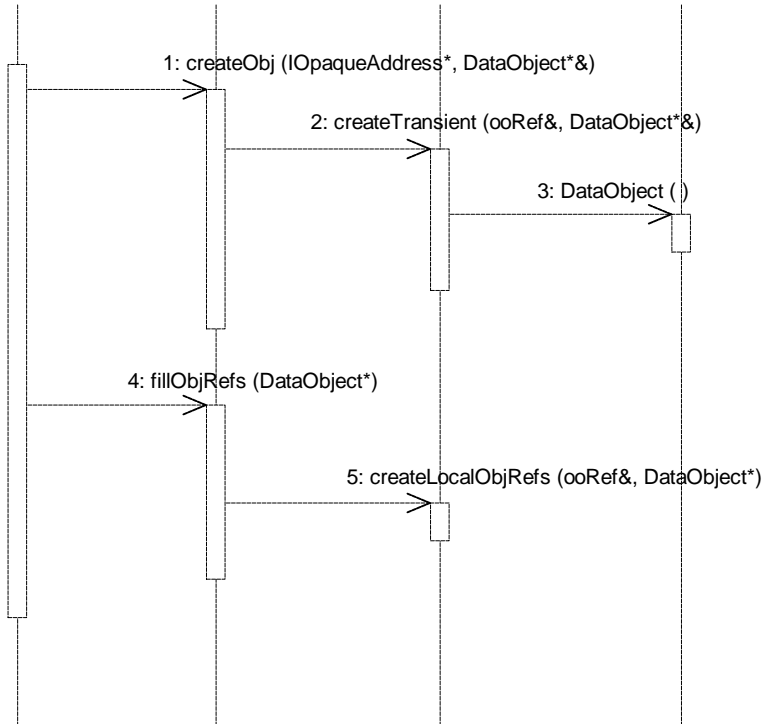
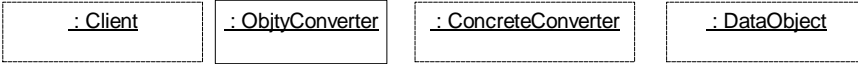


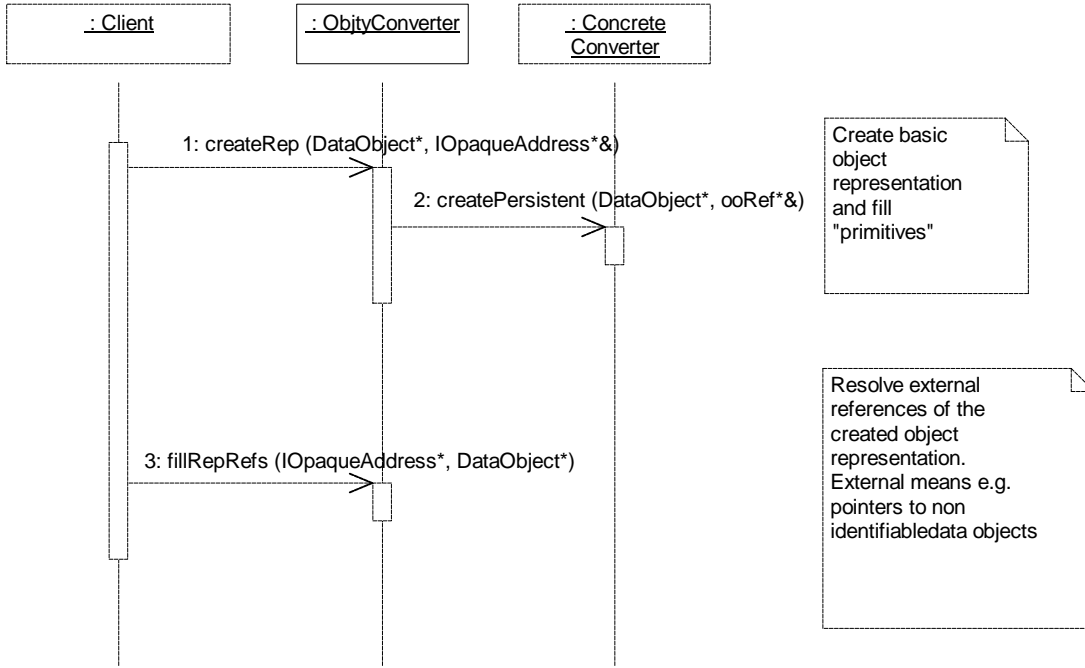
Test sequence to load an object from objectivity
IConverter::createObject (IOpaqueAddress* pAddress, DataObject*& refpObject)



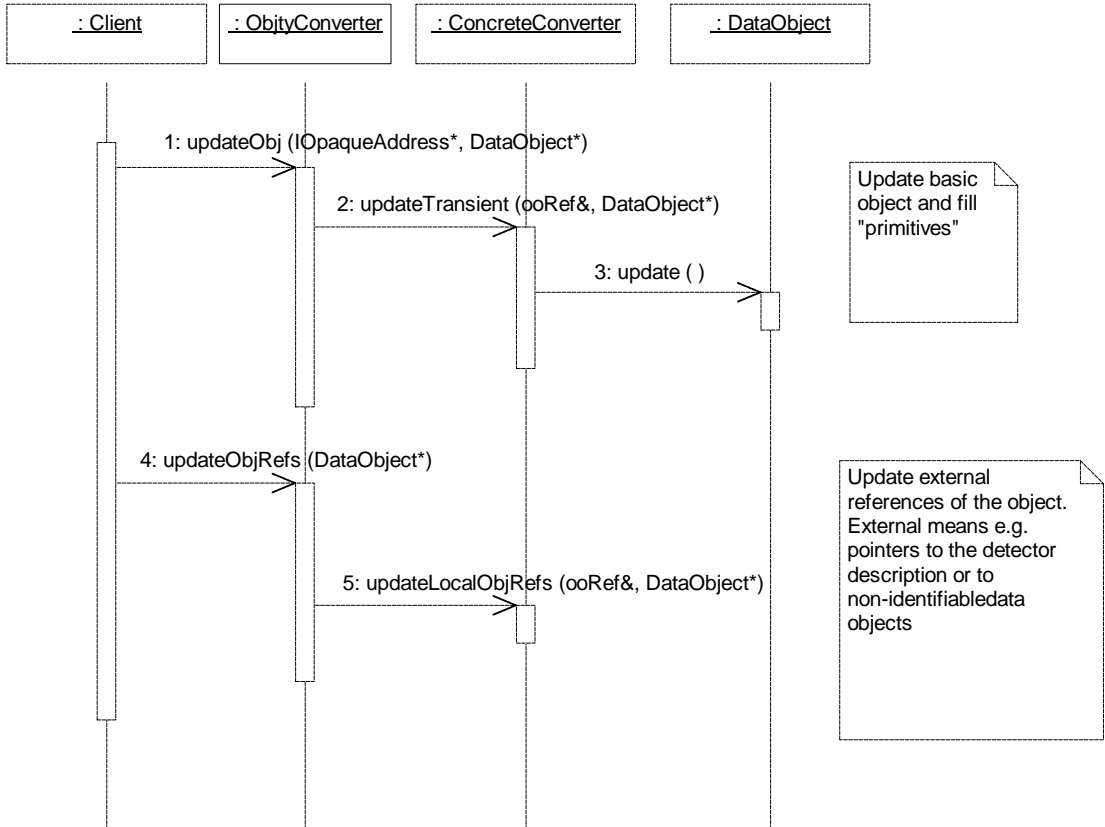
Create basic object and fill "primitives"

Resolve external references of the object.
External means e.g. pointers to the detector description or to non-identifiable data objects

Test sequence to save an object to objectivity
IConverter::createRep (DataObject* pObj, IOpaqueAddress*& refpAddress)



Test sequence to update an object from its representation stored in objectivity
IConverter::updateObject (IOpaqueAddress* pAddress, DataObject* pObject)



Test sequence to update the objectivity representation of an object
IConverter::updateRep (DataObject* pObj, IOpaqueAddress* pAddress)

